



METATARSOPHALANGEAL DORSAL FLEXION GUIDE

- ▶ The metatarsophalangeal dorsal flexion guide allows to simulate intraoperative support and check the alignment of the arthrodesis in case of fixation after fracture, osteotomy and arthrodesis of the first metatarsophalangeal joint.

The metatarsophalangeal dorsal flexion guide is supplied non sterile in two parts:

P01 00351 MTP Dorsal flexion guide - Sole

P01 00361 MTP Dorsal flexion guide - Heel

RECOMMANDATION

- ▶ It is recommended to read the instructions contained in the instructions for Use accompanying the product.

DEVICES

- ▶ Non-sterile reusable instrument: class I, CE

MANUFACTURER

- ▶ In2Bones SAS
28, chemin du Petit Bois
69130 Ecully – FRANCE
Phone : +33 (0)4 72 29 26 26
Fax : +33 (0)4 72 29 26 29

DOCUMENT

- ▶ Reference : FP-Semelle-EN-102016
Revision date: 10/2016 - Version 01

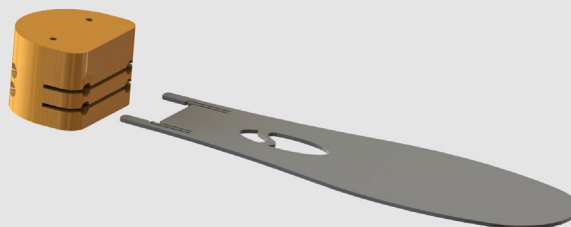
Availability of these products might vary from a given country or region to another, as a result of specific local regulatory approval or clearance requirements for sale in such country or region.

This medical device is a regulated health product, holding under this regulation, the CE mark.

To SIMULATE THE SUPPORT INTRAOPERATIVELY.



- ▶ Adjustment from 0 to 3 cm in 1 cm increment.



- ▶ Sole adapted to different sizes of foot.

- ▶ Present the MTP dorsal flexion guide on the sole of the foot while defining in advance the desired heel height. ▶

